

# Data sheet - SHARK duplex

## SHARK DUPLEx®

The fast MOUNTING SYSTEM  
for photovoltaic power plants.



### MANUFACTURER'S PRIME QUALITY

All the parts are produced in Germany and have the usual SHARK quality.



### FAST MOUNTING

No mounting system can be installed faster. Prefabrication and few parts save time and costs.



### AUDITED SAFETY

Static, material, execution and place of manufacture is tested and audited by VDE.



### KIND TO THE ROOF

The installation is executed without penetration of the roof; the watercourse is ensured.



### EXPERT'S REPORT OF I.F.I.

The institute for aerodynamics confirms the stability.



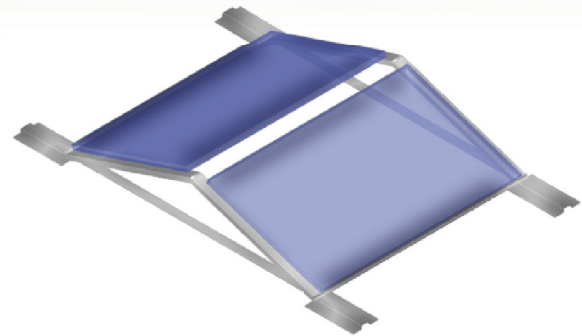
### AERODYNAMICALLY OPTIMIZED

The design developed in wind channel leads the wind perfectly through the system.



### RECYCLABLE AT 100 PERCENT

Used material has a life cycle of more than 20 years and is recyclable at 100 %.



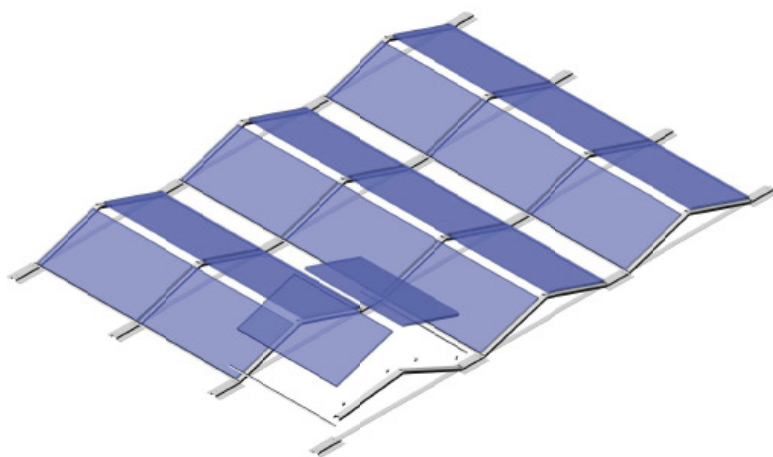
With the aerodynamically and technically optimized mounting system **SHARK duplex**, the area potential of flat or slightly inclined roofs can be used. Even roofs with low load reserves are suitable for this low ballast mounting system. In contrary to conventional, non penetrating mounting systems for flat roofs, The system gets normally along without additional ballast.

**SHARK duplex** convinces by its unique mounting friendliness. The system consist of few parts, prefabricated in factory, so that the assembly can be easily made.

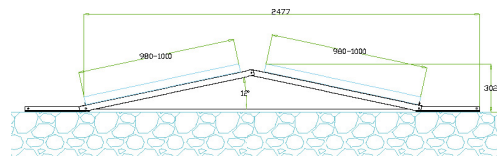
With this to east and west oriented system, the roof can be covered in optimal way, because shadow distances are no more necessary. This results into higher revenues for the operator of the installation. **SHARK duplex** cares clearly for equilibrated revenues and convinces by an outstanding price/performance ratio.

**20 YEARS  
WARRANTY**

# SHARK DUPLEx<sup>®</sup>



## duplex12



### Specification

incline	12 °
width module	980 - 1.000 mm*
weight	2 kg / m <sup>2</sup>
length	2.477 mm
area load	8 kg/m <sup>2</sup> **
material	aluminium
area demand	from 10 m <sup>2</sup> / kWp **

\* Special solutions for alternative width of modules are possible. System is applicable for all lengths of modules.

\*\* In dependence of type of module, subdivision of generator, location- and building data, the area demand and area load may differ.

## TECHNICAL DATA

range of application	flat roofs, slightly inclined roofs
roofing	foil, bitumen, gravel, green, sheet metal
incline roof	0° - 15°
PV-modules	putting on the short part and there fixed
orientation	east / west
connection to roof	without penetration of the roof
protection of building	protections pads, laminated by aluminium, already fixed
proof of wind load and basics of static	determination and construction of wing assembly in aluminium under the use of tests in wind channel, assumptions of loads acc. to DIN 1055 and Eurocode 1
lightning protection	precondition for the integration into the lightning protection (or potential compensation) are fulfilled (e.g. VDE 0100 part 712)
material	oxidation stability tested according to DIN ISO 6988 (sulphur dioxide) DIN EN 60028-2-1 (salt fog test)
connectors	screws V2A
installation time	10 kWp / man-hour
product warranty	20 years